

YOUR SUPPORT AT WORK

IN 2022, ST. MARY MEDICAL CENTER FOUNDATION FUNDING UNDERWROTE THE FOLLOWING PROGRAMS:

 <p>MEDICAL LIBRARY</p>	 <p>LOW VISION CENTER</p>	 <p>FAMILIES IN GOOD HEALTH</p>	 <p>MEDICAL EDUCATION</p>	 <p>BAZZENI SENIOR WELLNESS CENTER</p>
 <p>DIABETES PROGRAM</p>	 <p>VOLUNTEER SERVICES</p>			

OUR IMPACT BY THE NUMBERS

\$171
MILLION

raised by the Foundation for the Medical Center since inception

\$60
MILLION

in charity care and community benefit provided by the Medical Center last year

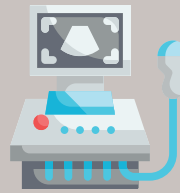
OVER 58,000

patients served last year

70 PERCENT
OF OUR PATIENTS

are insured by Medi-Cal or have no insurance

LARGE MEDICAL CENTER EQUIPMENT FUNDED BY THE FOUNDATION IN 2022



\$357,000

INTRAVASCULAR ULTRASOUND MACHINE

Determines the Risk of Heart Attack or Stroke



\$385,571

GAMMA CAMERA
Nuclear Medicine



\$335,996

WIRELESS ON WHEELS WORK STATIONS



\$49,789

FAST TRACK ULTRASOUND SYSTEM
For Trauma Patients



\$86,442

ICG MICROSCOPE
Illuminates Blood Vessels in the Brain During Surgery

OUR FUNDRAISING PRIORITIES



FAMILIES IN GOOD HEALTH

Provides family support services in diverse communities



MEDICAL CENTER

Provides compassionate, high-quality affordable health services to all



CARE CENTER

Provides HIV medical and psychosocial services



LOW VISION CENTER

Provides vision screenings and optical aids to children and adults at no cost